

BLACK HAWK
9300 SERIES

BIGGER, BETTER, FASTER...

**The Only Thing That Can Rival Its
Revolutionary Performance
Is Its Radically
Innovative Design**

BILSTEIN®
SHOCK ABSORBERS

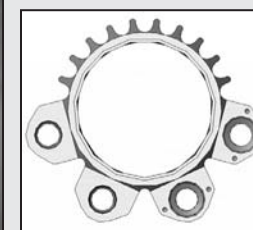
shock shown
actual size

FASTER

You don't get to be the leader by following the pack. Bilstein, the world leader in monotube gas pressure shock technology, introduces the next evolution in off-road race shocks...the **Black Hawk 9300 Series**. Big and bold with its Radial Bypass Damping technology and black hard anodized finish, this shock is like nothing you've ever seen, or felt, before.

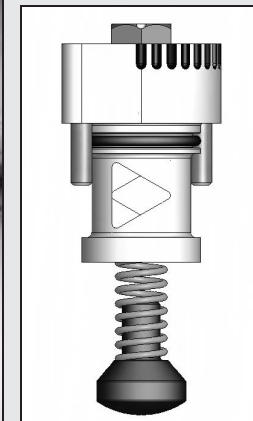
Don't run with the pack, get out and lead...

GET BILSTEIN! GO FASTER!



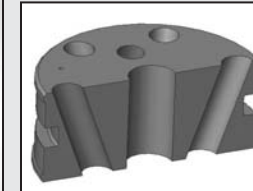
SHOCK BODY

- Rapid heat dissipating, one piece extruded 6061 aluminum construction featuring Radial Bypass Damping (RBD) technology
- Approximately 30% faster cooling efficiency than steel and up to 100° lower peak operating temperatures
- Stronger and 10%-25% lighter than similar welded steel bypass shock bodies without the distortion from welding



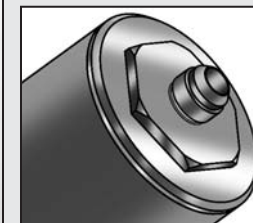
INCREMENTAL BYPASS FLOW METERING VALVE (IFMV)

- Extremely accurate, incremental flow adjustment within a sealed mechanism for extreme resistance to dirt contamination
- Easily adjustable color-coded Rebound (red) and Bump (blue) bypass adjusters with an internal detent feature providing prominent "clicks" to each of the 9 settings
- High impact, copolymer check valve piston providing excellent wear characteristics



SHOCK PISTON & ROD

- 3" O.D. 6061-T6 aluminum, Type III hard anodized piston with high-flow ports and 1" tall low friction bronze backed wear band with O-ring seal
- Industries largest Hard-Chromium plated piston rod currently offered at 1-1/8" O.D.



REMOTE RESERVOIR

- Massive 4-1/2" x 12" 6061-T6 aluminum reservoir housing
- High oil volume allows gas pressure to be greatly reduced (130%-175% on average), lowering the piston rod pressure and giving the vehicle greater damping control and "driver feel"